

Driving directions to Curtiss Farm, coming from the EAST on Highway 30:

Take the ELWOOD DRIVE exit, EXIT 146.

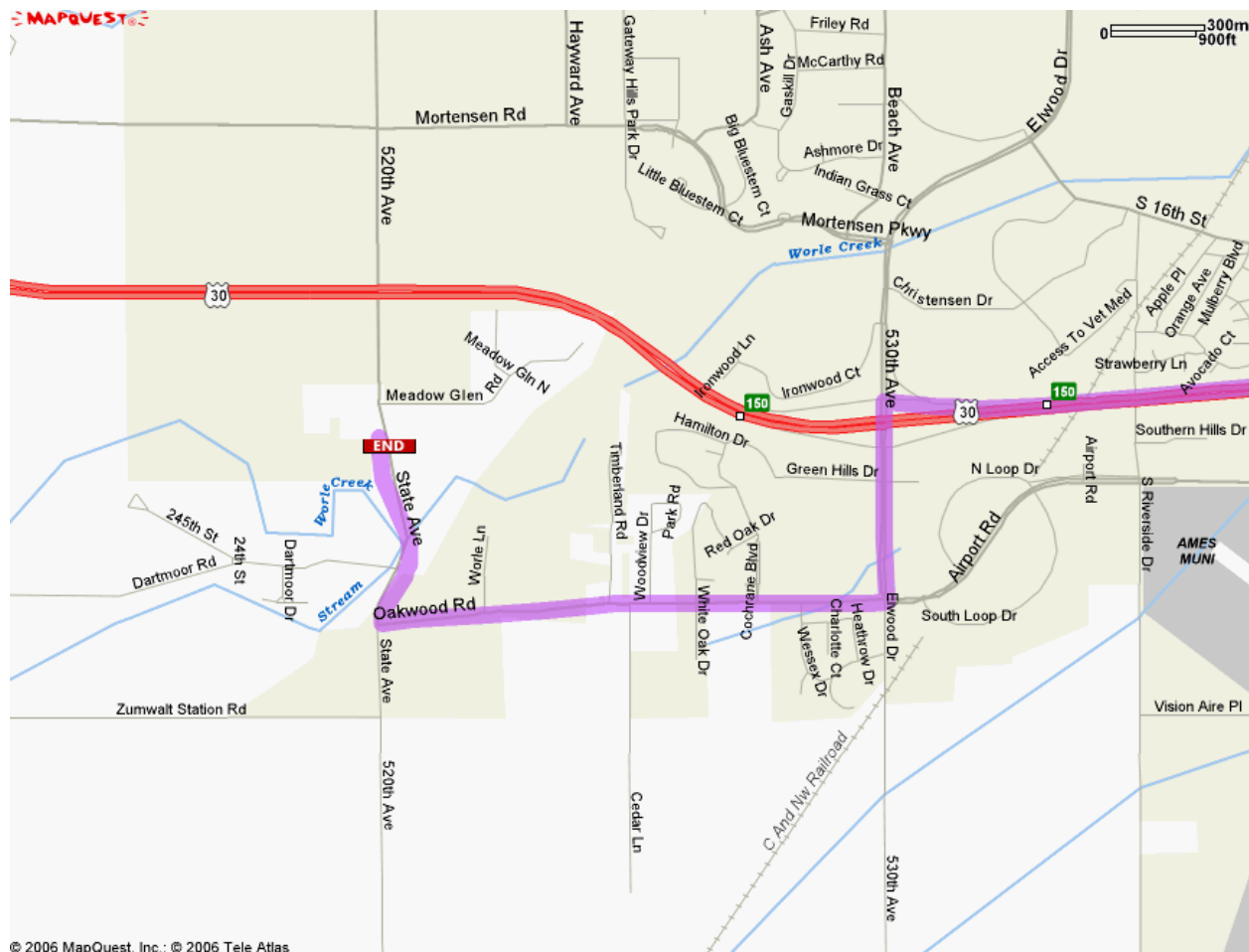
Turn LEFT (SOUTH) onto ELWOOD DR.

Go about ½ mile, then turn RIGHT (WEST) onto OAKWOOD RD.

Go 1 mile, then turn RIGHT onto 520th AVE/STATE AVE.

Drive 0.4 mile and turn left into the CURTISS FARM.

In this driveway, head west down the lane. There will be 2 steel buildings on the left—a green one, then a tan one. Our offices are in the tan one.



Driving directions to Curtiss Farm, coming from the WEST on Highway 30:

Take the SOUTH DAKOTA EXIT (EXIT 144).
Go LEFT (NORTH) ~ ¼ mile to MORTENSEN ROAD.
Turn RIGHT (EAST) and go about 1 mile to a 4-way stop sign.
Turn RIGHT (SOUTH) onto STATE AVE.
Go ~1 mile to 2219 STATE AVE.

The Curtiss Farm is on the east side of the State Ave, south of Highway 30. Our driveway has an 'ISU Curtiss Farm' sign. In this driveway, head west down the lane. There will be 2 steel buildings on the left—a green one, then a tan one. Our offices are in the tan one.

2219 State Ave.
Ames, IA 50010
515-292-7126 (shop/office)
515-291-5460 (Chad's cell)